

CREATURES THAT FEED ON THE SHORE



Watch gulls feeding at the beach

SEARCHING FOR CREATURES

When searching for seashore creatures you don't need much at all. Your best tools are your eyes and hands with lots of patience and kindness along with a few pieces of correct kit and an identification guide to help you name what you see. Check the tides before you search.



Avoid trampling our reefs



Hire the correct kit

Pop in and see us at Rest Bay Watersports Centre, Porthcawl for advice and to hire, or buy, only what you need for your Bridgend seashore creature adventures.

HANDLING CREATURES

Our shores are full of amazing creatures to discover. As a general rule it's always best to just watch them. If you do decide to touch, or pick them up, make sure you know which ones are safe to do so and which creatures can be harmed if we do.

Book a 'Rockpool School' lesson with a marine biologist teacher to find out. You can do this online www.beachacademywales.com/whatson Or in person at Rest Bay Watersports Centre, Porthcawl.



Please don't touch starfish

CREATURES FROM THE PAST

Search for fossils at Rest Bay, Porthcawl in the carboniferous limestone. This is a sedimentary rock formed when layers of sand, mud and animal remains, like shell, fell to the bottom of the ocean 290-354 million years ago!



Sea snails (Molluscs)



Coral colony (Lithostrotion)



Bivalves (Molluscs)

Go in search of fossils, or book a lesson with Beach Academy. Remember it is against the law to remove ANY rocks from a beach. Just look, touch and sketch your favourites.

SEASHORE CREATURES

Identification Guide

BRIDGEND BEACHES

MARINE & ENVIRONMENTAL EDUCATION



South-claw hermit crab
Search the water's edge at a low spring tide!

BEACH

★ ACADEMY ★



facebook beachacademywales
twitter @BeachAcadWales
instagram @Beachacademywales

www.beachacademywales.com



PARTNERIAETH NATUR LLEOL
PEN-Y-BONT AR OGWR
BRIDGEND
LOCAL NATURE PARTNERSHIP



Ariennir gan
Lywodraeth Cymru
Funded by
Welsh Government



CREATURES LIVING IN ROCKPOOLS

Search carefully in shallow water on rocky seashores. Respect all animal life and learn to handle correctly.



Edible crab



Common shore crab



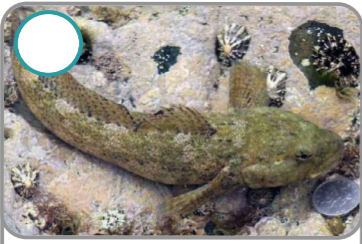
Common hermit crab



Velvet swimming crab



Porcelain crab



Goby



Beadlet anemone



Acorn barnacles



Common whelk



Dog whelk



Chiton



Snakelock anemone



Common mussel



Common limpet



Brown shrimp



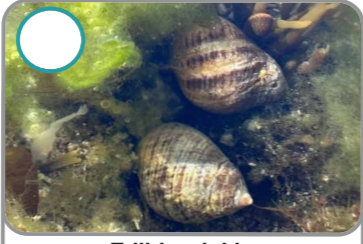
Common prawn



Flat winkle



Small winkle



Edible winkle



Rough winkle



Grey topshell



Thick topshell



Purple topshell



Common starfish



Spirorbis tube worm



Keelworm



Honeycomb worm



Pipefish

CREATURES WASHED UP ON THE SHORE

Strandlines, at the top of the shore, contain animal remains and eggcases left behind by the tides.



Bivalve mollusc shells



Hornwrack colony



Goose barnacles on litter



Cuttlefish internal shell



Skate eggcases



Mermaid's glove sponge



Shark eggcases



Common whelk eggcases



Crab moults / bodyparts



Stranded sharks



By-the-wind sailor



Sea urchin tests



Sea snail mollusc shells



Sea beard colony



Marine mammals

Report any marine mammal strandings on the Bridgend coast (dead or alive) to Emma at Beach Academy on 07966 572273